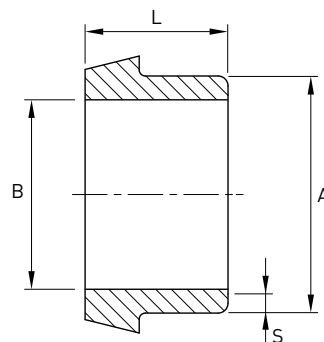


Maschio a saldare

Norme: DIN 11852 Serie A - Range 2

Materiale: Aisi 304L EN 1.4307 - Aisi 316L - EN 1.4404

cod. 522



| DN | Tubo De mm | B mm | A mm | L mm | S mm | Stock |
|-----|------------|------|------|------|------|-------|
| 15 | 19 | 16 | 19 | 17 | 1,5 | D |
| 20 | 23 | 20 | 23 | 18 | 1,5 | D |
| 25 | 29 | 26 | 29 | 22 | 1,5 | D |
| 32 | 35 | 32 | 35 | 25 | 1,5 | D |
| 40 | 41 | 38 | 41 | 26 | 1,5 | D |
| 50 | 53 | 50 | 53 | 28 | 1,5 | D |
| 65 | 70 | 66 | 70 | 32 | 2 | D |
| 80 | 85 | 81 | 85 | 37 | 2 | D |
| 100 | 104 | 100 | 104 | 44 | 2 | D |