

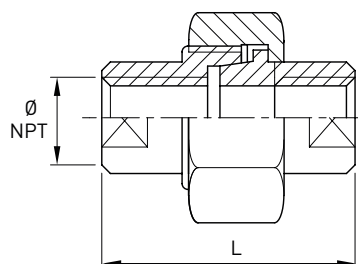
# Bocchettone F/F serie 3000 NPT

## (F/F union)

Norme: ANSI B16.11 - ASME B1.20.1

Materiale: Aisi 316L EN 1.4404

cod. 470



DN	Ø NPT inch	D mm	L mm	Stock
15	1/2"	21,34	50	D
20	3/4"	26,7	57	D
25	1"	33,4	62	D
32	1 1/4"	42,16	71	D
40	1 1/2"	48,26	76	D
50	2"	60,3	86	D