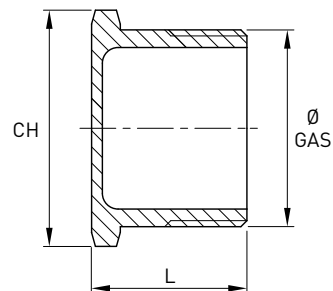


# Tappo maschio microfuso - Fig. 290

Norme: ISO 7/1 GAS Conico  
 Materiale: Aisi 316 EN 1.4401

cod. **449**



DN	Ø GAS inch	CH mm	L mm	Stock
5	1/8"	14	15	D
8	1/4"	17	18	D
10	3/8"	21	18	D
15	1/2"	26	20,5	D
20	3/4"	31	24	D
25	1"	38	27	D
32	1 1/4"	45,5	29	D
40	1 1/2"	52	31	D
50	2"	62	36	D
65	2 1/2"	80	39	D
80	3"	93	44	R
100	4"	118	51	R