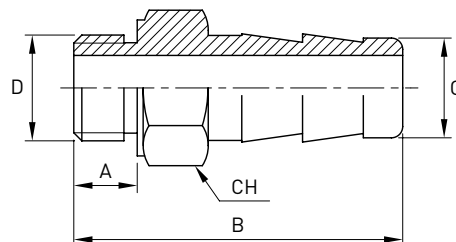


Portagomma tornito

Norme: ISO 228/1 GAS Cilindrico

Materiale: Aisi 304L EN 1.4307 - Aisi 316L EN 1.4404

cod. 426



DN	Ø GAS inch	D mm	A mm	B mm	C mm	CH mm	Stock
8	1/4"	13,7	10	40	13	17	D
10	3/8"	17,2	10	44	16,5	19	D
15	1/2"	21,3	13	50	21	24	D
20	3/4"	26,9	15	55	26,5	30	D
25	1"	33,7	17	65	33	36	D
32	1 1/4"	42,4	18	70	42	46	D
40	1 1/2"	48,3	20	75	48	50	D
50	2"	60,3	21	75	60	65	D