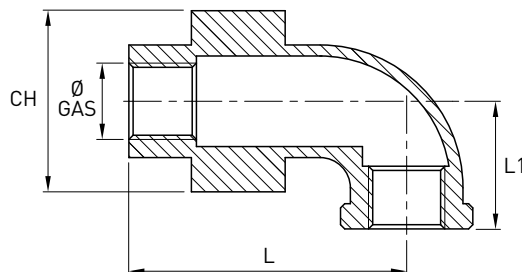


# Bocchettone curvo microfuso 90 gradi F/F sede conica - Fig. 96

Norme: ISO 228/1 GAS Cilindrico X ISO 228/1 GAS Cilindrico

Materiale: Aisi 316 EN 1.4401

cod. 418



DN	Ø GAS inch	CH mm	L mm	L1 mm	Stock
15	1/2"	37,1	56	27	D
20	3/4"	46	61	31	D
25	1"	52	70,5	36	D
32	1 1/4"	65	78	42	D
40	1 1/2"	70	83	46	D
50	2"	84,5	96	56	D