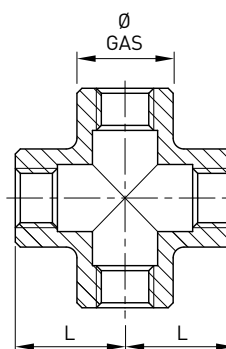


## Croce filettata microfusa - Fig. 180

Norme: ISO 228/1 GAS Cilindrico

Materiale: Aisi 316 EN 1.4401

cod. 415



DN	Ø GAS inch	L mm	Stock
5	1/8"	17,1	R
8	1/4"	19,1	R
10	3/8"	23	R
15	1/2"	27,2	R
20	3/4"	32	R
25	1"	38	R
32	1 1/4"	45	R
40	1 1/2"	48,1	R
50	2"	57	R
65	2 1/2"	69	R
80	3"	78	R
100	4"	96	R