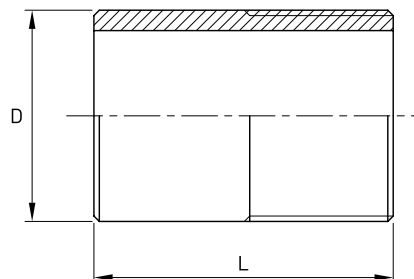


Tronchetto standard

Norme: ISO 7/1 GAS Conico

Materiale: Aisi 304L EN 1.4307 - Aisi 316L EN 1.4404

cod. 401



DN	Ø GAS inch	D mm	L mm	Stock
5	1/8"	10,2	16	D
8	1/4"	13,7	22	D
10	3/8"	17,2	22	D
15	1/2"	21,3	25	D
20	3/4"	26,9	30	D
25	1"	33,7	35	D
32	1 1/4"	42,4	40	D
40	1 1/2"	48,3	45	D
50	2"	60,3	50	D
65	2 1/2"	76,1	50	D
80	3"	88,9	50	D
100	4"	114,3	50	D
125	5"	139,7	60	D
150	6"	168,3	60	D