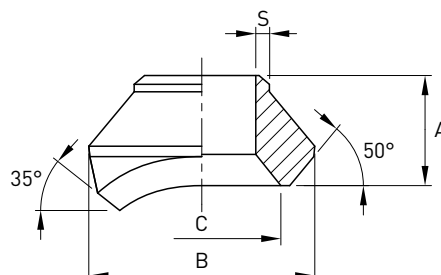


Weldolet serie 3000 BW STD-XS (Standard weight and extra strong)

Norme: MSS SP 97

Materiale: Aisi 304L EN 1.4307 – Aisi 316L EN 1.4404

cod. 391



DN	Ø BW inch	B mm	C mm	A mm	Stock
8	1/4"	25,4	15,9	14,3	R
10	3/8"	31,8	19,0	19,0	R
15	1/2"	34,9	23,8	19,0	R
20	3/4"	44,5	30,2	22,2	R
25	1"	54,0	36,5	27,0	R
32	1 1/4"	65,1	44,4	31,7	R
40	1 1/2"	73,0	50,8	33,3	R
50	2"	88,9	65,1	38,1	R

La quota S deve essere indicata in fase d'ordine.