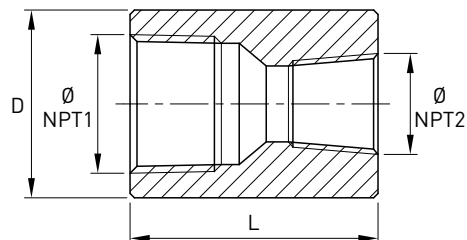


Manicotto ridotto serie 3000 NPT (reducing socket)

Norme: ASME B16.11 - ASME B1.20.1

Materiale: Aisi 304L EN 1.4307 - Aisi 316L EN 1.4404

cod. **389**

DN1	DN2	Ø NPT1 inch	Ø NPT2 inch	D mm	L mm	Stock
10	8	3/8"	1/4"	22	38	R
15	8	1/2"	1/4"	28	48	R
15	10	1/2"	3/8"	28	48	R
20	15	3/4"	1/2"	35	51	R
25	15	1"	1/2"	44	51	R
25	20	1"	3/4"	44	60	R
32	25	1 1/4"	1"	57	67	R
40	20	1 1/2"	3/4"	64	79	R
40	25	1 1/2"	1"	64	79	R
40	32	1 1/2"	1 1/4"	64	79	R
50	25	2"	1"	76	86	R
50	40	2"	1 1/2"	76	86	R