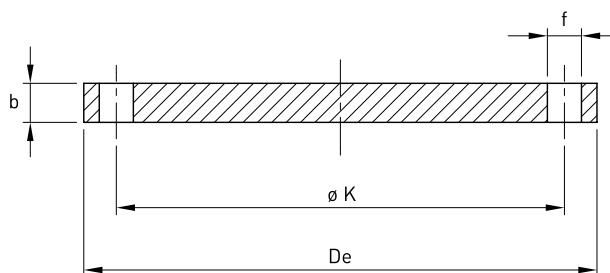


Flangia cieca PN 40

Norme: EN1092-1 TYPE 05A - ASTM A182

Materiale: Aisi 304L EN 1.4307 - Aisi 316L EN 1.4404

cod. 343F



DN	DN inch	Flangia mm			Foratura			Stock	Peso kg
		ø K	De	b	f mm	Vite	Fori		
15	1/2"	65	95	16	14	M12	4	R	0,81
20	3/4"	75	105	18	14	M12	4	R	1,14
25	1"	85	115	18	14	M12	4	R	1,38
32	1 1/4"	100	140	18	18	M16	4	R	2,03
40	1 1/2"	110	150	18	18	M16	4	R	2,35
50	2"	125	165	20	18	M16	4	R	3,20
65	2 1/2"	145	185	22	18	M16	8	R	4,29
80	3"	160	200	24	18	M16	8	R	5,53
100	4"	190	235	24	22	M20	8	R	7,59
125	5"	220	270	26	26	M24	8	R	10,80
150	6"	250	300	28	26	M24	8	R	14,70
200	8"	320	375	36	30	M27	12	R	27,20
250	10"	385	450	38	33	M30	12	R	44,40
300	12"	450	515	42	33	M30	16	R	64,20
350	14"	510	580	46	36	M33	16	R	89,50
400	16"	585	660	50	39	M36	16	R	127,00