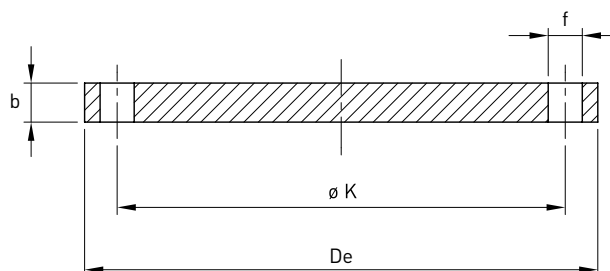


Flangia cieca PN10

Norme: EN1092-1 TYPE 05A - ASTM A182

Materiale: Aisi 304L EN 1.4307 - Aisi 316L EN 1.4404

cod. 342F



DN	DN inch	Flangia mm			Foratura			Stock	Peso kg
		ø K	De	b	f mm	Vite	Fori		
200	8"	295	340	24	22	M20	8	D	16,500
250	10"	350	395	26	22	M20	12	D	24,100
300	12"	400	445	26	22	M20	12	D	30,800
350	14"	460	505	26	22	M20	16	D	39,600
400	16"	515	565	26	26	M24	16	D	49,400
450	18"	565	615	28	26	M24	20	D	58,600
500	20"	620	670	28	26	M24	20	D	75,200
600	24"	725	780	34	30	M27	20	R	124,000
700	28"	840	895	38	30	M27	24	R	183,000
800	32"	950	1015	42	33	M30	24	R	260,000
900	36"	1050	1115	46	33	M30	28	R	344,000
1000	40"	1160	1230	52	36	M33	28	R	473,000