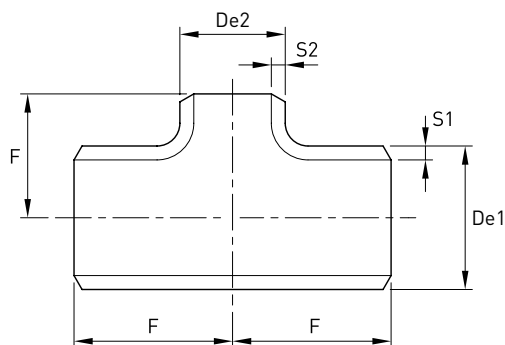


Tee ridotto *Welded*

Norme: ASME B16.9 - ASTM A403 WP-W

Materiale: Aisi 304L EN 1.4307 - Aisi 316L EN 1.4404

cod. **323W**

De1 x De2 mm	S1 x S2 mm	Dimensioni	F mm	Stock	Peso kg
88,90 x 33,40	3,05 x 2,77	3" x 1" SCH 10S	86	D	1,15
88,90 x 33,40	5,49 x 3,38	3" x 1" SCH 40S	86	D	2,05
88,90 x 48,30	3,05 x 2,77	3" x 1.1/2" SCH 10S	86	D	1,19
88,90 x 48,30	5,49 x 3,68	3" x 1.1/2" SCH 40S	86	D	2,05
88,90 x 60,33	3,05 x 2,77	3" x 2" SCH 10S	86	D	1,23
88,90 x 60,33	5,49 x 3,91	3" x 2" SCH 40S	86	D	2,16
88,90 x 73,03	3,05 x 3,05	3" x 2.1/2" SCH 10S	86	D	1,31
88,90 x 73,03	5,49 x 5,16	3" x 2.1/2" SCH 40S	86	D	2,29
114,30 x 60,33	3,05 x 2,77	4" x 2" SCH 10S	105	D	2,35
114,30 x 60,33	6,02 x 3,91	4" x 2" SCH 40S	105	D	4,50
114,30 x 73,03	3,05 x 3,05	4" x 2.1/2" SCH 10S	105	D	2,45
114,30 x 73,03	6,02 x 5,16	4" x 2.1/2" SCH 40S	105	D	4,70
114,30 x 88,90	3,05 x 3,05	4" x 3" SCH 10S	105	D	2,50
114,30 x 88,90	6,02 x 5,49	4" x 3" SCH 40S	105	D	4,80
141,30 x 88,90	3,40 x 3,05	5" x 3" SCH 10S	124	D	3,13
141,30 x 88,90	6,55 x 5,49	5" x 3" SCH 40S	124	D	5,85
141,30 x 114,30	3,40 x 3,05	5" x 4" SCH 10S	124	D	3,26
141,30 x 114,30	6,55 x 6,02	5" x 4" SCH 20S	124	D	6,14
168,28 x 88,90	7,11 x 5,49	6" x 3" SCH 40S	124	D	9,80
168,28 x 114,30	3,40 x 3,05	6" x 4" SCH 10S	143	D	5,10
168,28 x 114,30	7,11 x 6,02	6" x 4" SCH 40S	143	D	10,00
219,08 x 114,30	3,76 x 3,05	8" x 4" SCH 10S	178	R	8,00
219,08 x 114,30	8,18 x 6,02	8" x 4" SCH 40S	178	R	17,50
219,08 x 168,28	3,76 x 3,40	8" x 6" SCH 10S	178	R	8,40
219,08 x 168,28	8,18 x 7,11	8" x 6" SCH 40S	178	R	18,10